

Quark Card Dealer

xi 0

xi baryon **uss**
 mass : 1322 MeV
 life : 1.64×10^{-10} s

sigma

sigma baryon **d ds**
 mass : 1197 MeV
 life : 1.48×10^{-10} s

omega

Omega baryon **sss**
 mass : 1672 MeV
 life : 8.21×10^{-11} s

lambda 0

Lambda baryon **u ds**
 mass : 1116 MeV
 life : 2.63×10^{-10} s

delta

Delta baryon **d dd**
 mass : 1232 MeV
 life : 5.57×10^{-24} s

JICFuS

Quark Card Dealer

xi 0

xi baryon **d ss**
 mass : 1322 MeV
 life : 1.64×10^{-10} s

sigma $+$

Sigma baryon **uus**
 mass : 1189 MeV
 life : 8.02×10^{-11} s

proton $+$

proton **uud**
 mass : 938 MeV
 life : $> 2.1 \times 10^{29}$ yr

neutron 0

neutron **udd**
 mass : 940 MeV
 life : 885.7 s 29 yr

delta $+$ $+$

Delta baryon **uuu**
 mass : 1232 MeV
 life : 5.57×10^{-24} s

JICFuS

Quark Card Dealer

Quark Card Dealer

Quark Card Dealer

Quark Card Dealer

Quark Card Dealer

 Joint Institute for
JICFUS Computational Fundamental Science

 Joint Institute for
JICFUS Computational Fundamental Science

 Joint Institute for
JICFUS Computational Fundamental Science

 Joint Institute for
JICFUS Computational Fundamental Science

 Joint Institute for
JICFUS Computational Fundamental Science

Quark Card Dealer

Quark Card Dealer

Quark Card Dealer

Quark Card Dealer

Quark Card Dealer

 Joint Institute for
JICFUS Computational Fundamental Science

 Joint Institute for
JICFUS Computational Fundamental Science

 Joint Institute for
JICFUS Computational Fundamental Science

 Joint Institute for
JICFUS Computational Fundamental Science

 Joint Institute for
JICFUS Computational Fundamental Science

Quark Card Dealer

Green

b bottom quark

JICFUS

Quark Card Dealer

phi-meson Φ^0

phi meson
mass : 1019 MeV
life : 1.54×10^{-22} s

JICFUS

Quark Card Dealer

K-meson K^0

K meson $d\bar{s} \pm s\bar{d}$
mass : 498 MeV
life (S) : 8.98×10^{-11} s
life (L) : 5.12×10^{-8} s

JICFUS

Quark Card Dealer

K-meson K^+

K meson
mass : 494 MeV
life : 1.24×10^{-8} s

JICFUS

Quark Card Dealer

K-meson K^-

K meson
mass : 494 MeV
life : 1.24×10^{-8} s

JICFUS

Quark Card Dealer

Blue

t top quark

JICFUS

Quark Card Dealer

Red

c charm quark

JICFUS

Quark Card Dealer

pi-meson π^0

pi meson $u\bar{u} - d\bar{d}$
mass : 135 MeV
life : 8.4×10^{-17} s

JICFUS

Quark Card Dealer

pi-meson π^+

pi meson
mass : 140 MeV
life : 2.60×10^{-8} s

JICFUS

Quark Card Dealer

pi-meson π^-

pi meson
mass : 140 MeV
life : 2.60×10^{-8} s

JICFUS

Quark Card Dealer

Quark Card Dealer

Quark Card Dealer

Quark Card Dealer

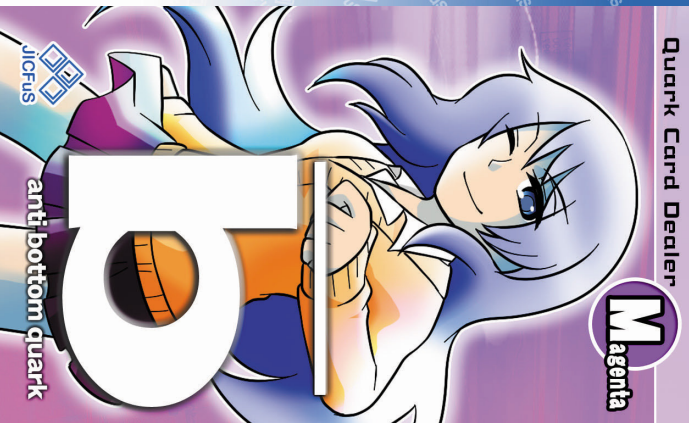
 Joint Institute for
Computational Fundamental Science

 Joint Institute for
Computational Fundamental Science

 Joint Institute for
Computational Fundamental Science

 Joint Institute for
Computational Fundamental Science

Quark Card Dealer
M
Magenta

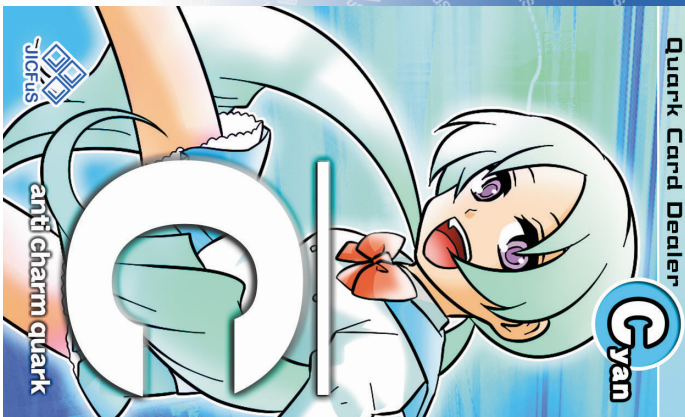


Quark Card Dealer

Quark Card Dealer

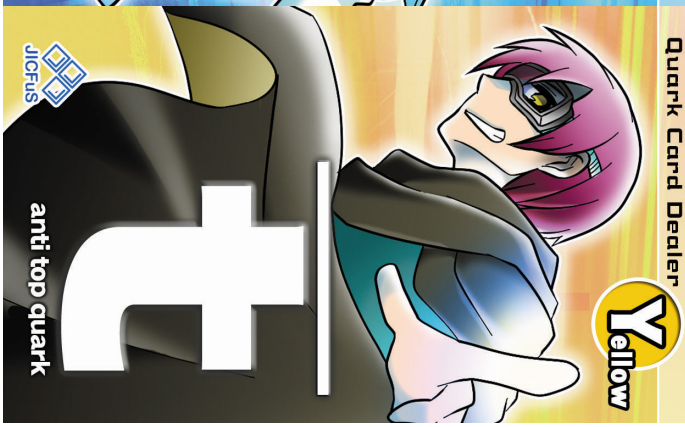
Quark Card Dealer

Quark Card Dealer



C
Cyan

Quark Card Dealer



Y
Yellow

 Joint Institute for
Computational Fundamental Science

 Joint Institute for
Computational Fundamental Science

 Joint Institute for
Computational Fundamental Science

 Joint Institute for
Computational Fundamental Science